



Storm Water Department MS4 Program

Instructions:

If an illicit discharge is observed, contact Public Works or Engineering to report the issue or visit the on-line comments/concerns form.

REPORT POLLUTION IMMEDIATELY!

Public Works	(260) 748-7056
Engineering	(260) 748-7030
Emergencies	(260) 414-9097



Spotting Illicit Discharges

Pollution detection of sediment, nutrients, oil and bacteria that can drain to lakes and streams through storm drains.



REPORT THESE ITEMS:

- Spills and contamination to lakes, rivers and streams
- Suspicious dumping to waterways
- Unusual discharges from pipes
- Sewage on the ground or draining to water bodies
- Large number of dead fish in waterways
- Failing or leaky septic systems
- Polluted runoff from storage piles or dumpsters into waterways
- Sewage, detergent, chemical, petroleum or rotten egg odors
- Soil erosion from construction sites

Sanitary/Septic Sewer Discharges

Observations:

- Sanitary debris/paper
- Staining on pipe
- Soap suds
- Gray or colored water
- Strange odors



Industrial Discharges

Observations:

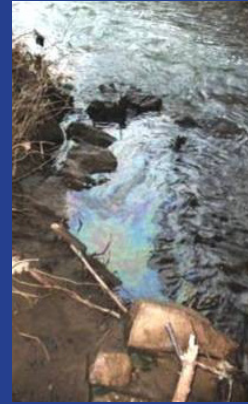
- Loose debris
- White foam
- Odor
- Color



Illegal Dumping & Spills

Observations:

- Oil sheen
- Stained rocks or vegetation
- Odor: petroleum or chemical
- Odor or color
- Many dead fish
- Trash in ditch or stream



CALL THE CITY IMMEDIATELY
260-748-7056 or 260-414-9097

Construction Site Runoff

Observations:

- Soil leaving site
- Sediment flow to storm drain inlet



Nutrients /Fertilizer

Observations:

- Excessive algae growth

